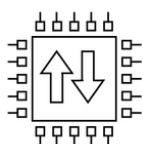




NOX RE BLIND



Electronic
limit switch

Radio control

NOX RE BLIND

The NOX RE BLIND motor, with electronic limit switch and unidirectional radio receiver, is designed for folding blinds, roller blinds and wooden Venetian blinds. Its compact dimensions allow easy installation in 25x25 mm boxes. This motor guarantees precise and efficient control of your blinds, providing comfort and versatility.

REFERENCE



NOX RE BLIND | 70.325.400

Electronic limit switch configurable from the transmitter.

Small dimensions (202mm), with a low noise level.

12v operation (requires transformer).

Up to 2.5kg 45 revolutions per minute.

TECHNICAL CHARACTERISTICS

Par-nominal	Speed	Feeding	Nominal power	Amperage	Working time	Max rotations	Degree of protection	Length measurement	Max Weight
0.8 Nm	45 rpm	12v D.C	36 In	0.15 A	4 min	∞	IP 20	202 mm	2.5 Kg

MOTOR CONNECTORS



COMPATIBLE WITH



KUMO WAVE
BD.100.001



KIK1
BD.003.101



KIKWALLL
90.003.101

ACCESSORIES



**REBLIND DRAWER
ADAPTER**

77.325..440K

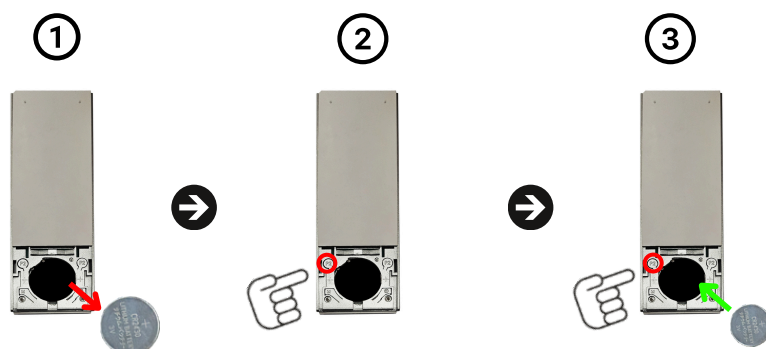


**BLIND MOTOR ROD
ADAPTER 4MM**

70.325.440C

INSTRUCTIONS:

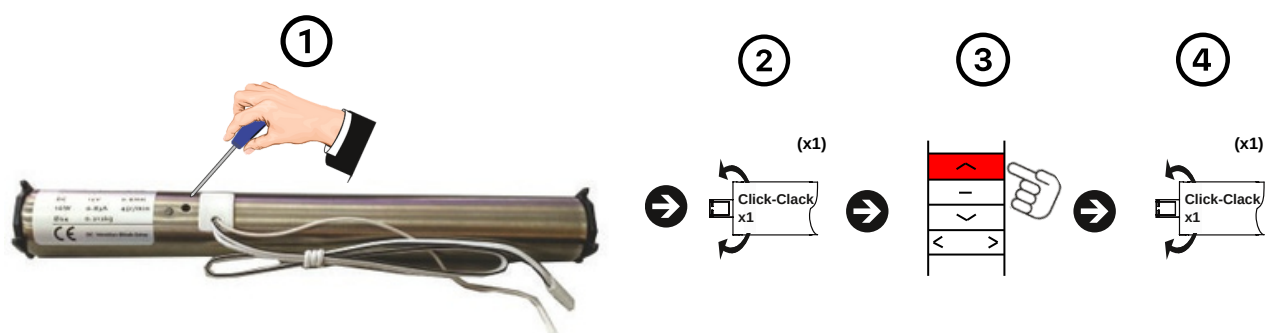
1. PROTOCOL CHANGE (UNIDIRECTIONAL / BIDIRECTIONAL)



Procedure:

1. Remove the battery from the remote control
 2. Hold the left P2 button
 3. While holding down the P2 button on the remote, replace the battery in its place.
- KIK 15: The remote will confirm one-way (1) or two-way (2) mode on the screen.
 - KIK 1: Will make one blue flash (one way) or two blue flashes (two way) between the stop button and the down button.

2. LINK FIRST TRANSMITTER

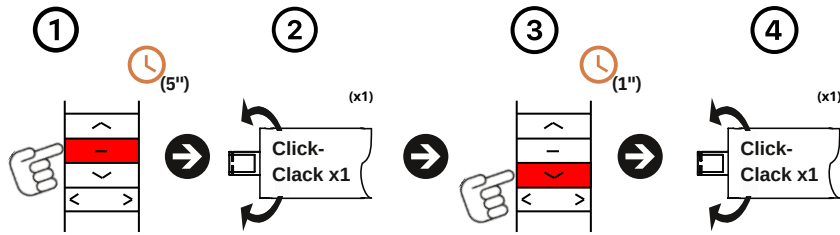


Procedure:

Make sure the transmitter is in one-way mode before performing this procedure.

1. Use a thin-tipped tool to press the Motor button.
2. The motor will make a "CLICK-CLACK" sound (x1).
3. Press (UP) on the remote control to record.
4. The motor will make a "CLICK-CLACK" sound (x1).

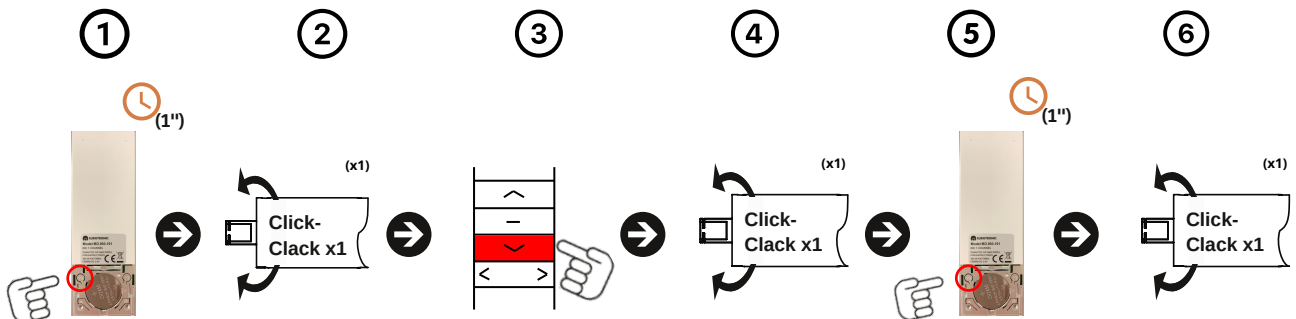
3. CHANGE DIRECTION



Procedure:

1. Press and hold the (STOP) button for five seconds (5").
2. The motor will make a "CLICK-CLACK" sound (x1).
3. Press the (DOWN) button for one second (1").
4. The motor will make a "CLICK-CLACK" sound (x1).

4. SET THE LOWER LIMIT SWITCH

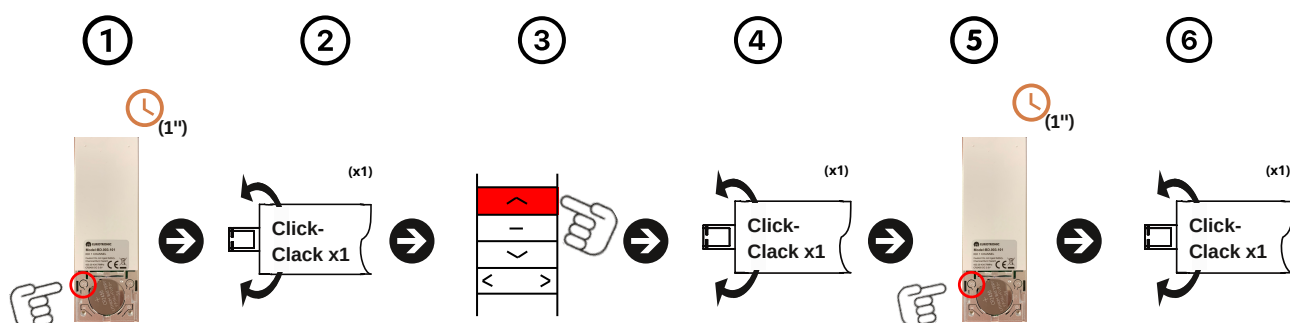


Procedure:

Position the curtain 10 cm from the desired lower limit point before carrying out the process.

1. Press the button (P2) located on the back for one second (1").
2. The motor will make a "CLICK-CLACK" sound (x1).
3. Next we will press the (DOWN) button and take it to the desired end of stroke point.
4. The motor will make a "CLICK-CLACK" sound (x1).
5. We will press the (P2) button again for one second (1") to confirm.
6. The motor will make a "CLICK-CLACK" sound (x1).

5. SET THE UPPER LIMIT SWITCH

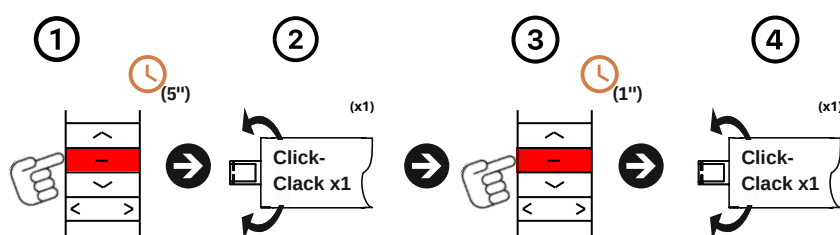


Procedure:

Position the curtain 10 cm from the desired upper limit point before carrying out the process.

1. Press the button (P2) located on the back for one second (1").
2. The motor will make a "CLICK-CLACK" sound (x1).
3. Next we will press the (UP) button and take it to the desired end of stroke point.
4. The motor will make a "CLICK-CLACK" sound (x1).
5. We will press the (P2) button again for one second (1") to confirm.
6. The motor will make a "CLICK-CLACK" sound (x1).

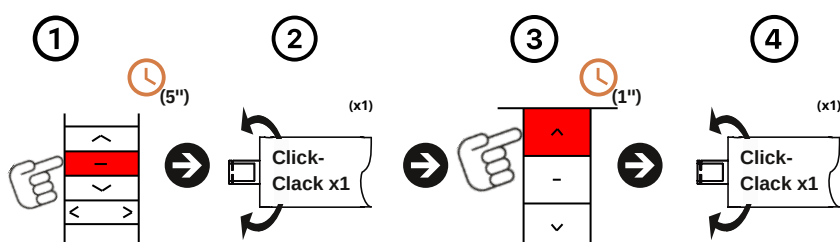
6. CONTINUOUS OR IMPULSE MODE



Procedure:

1. Press and hold the (STOP) button for five seconds (5").
2. The motor will make a "CLICK-CLACK" sound (x1).
3. Press the (STOP) button for one second (1").
4. The motor will make a "CLICK-CLACK" sound (x1).

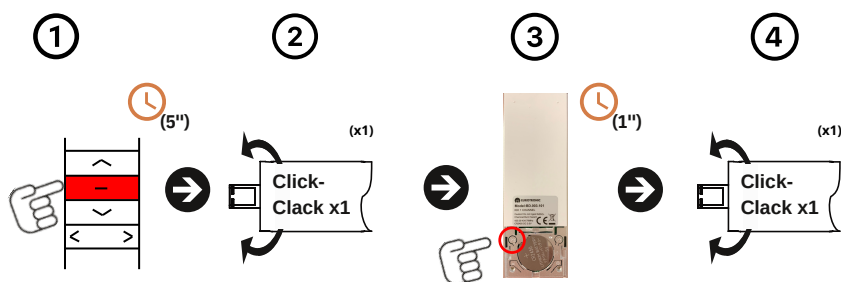
7. RECORD A NEW TRANSMITTER



Procedure:

1. Press and hold the (STOP) button for five seconds (5").
2. The motor will make a "CLICK-CLACK" sound (x1).
3. Press the (UP) button for one second (1") ON THE NEW REMOTE YOU WANT TO RECORD.
4. The motor will make a "CLICK-CLACK" sound (x1).

8. REMOVE A TRANSMITTER

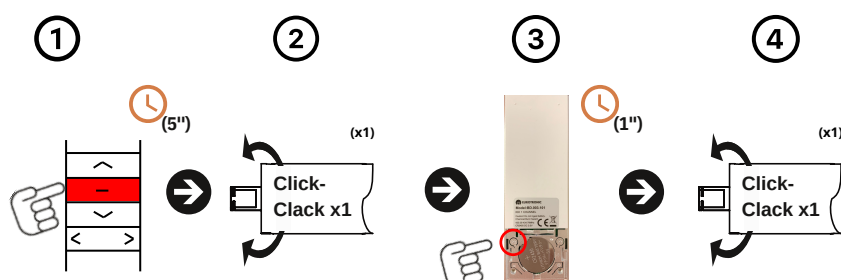


Procedure:

1. Press and hold the (STOP) button for five seconds (5").
2. The motor will make a "CLICK-CLACK" sound (x1).
3. Press the (UP) button for one second (1") ON THE NEW REMOTE YOU WANT TO RECORD.
4. The motor will make a "CLICK-CLACK" sound (x1).

9. RESET THE MOTOR TO FACTORY MODE

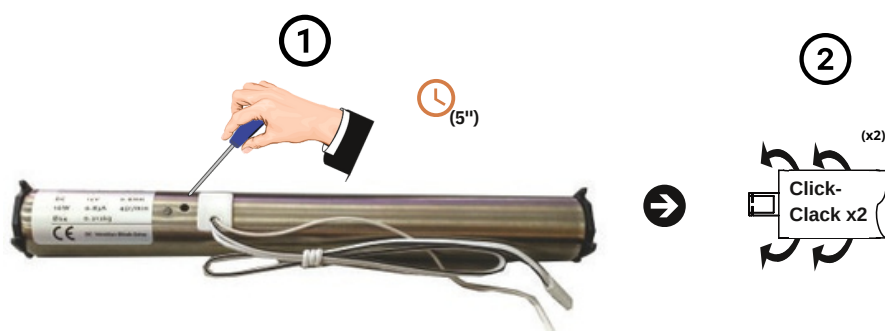
From the controller:



Procedure:

1. Press and hold the (STOP) button for five seconds (5").
2. The motor will make a "CLICK-CLACK" sound (x1).
3. Press the (UP) button for ten seconds (10")
4. The motor will make a "CLICK-CLACK" sound (x1).

From the Motor button:



Procedure:

1. Use a thin-tipped tool to press the Motor button for five seconds (5").
2. The motor will make two "CLICK-CLACK" sounds (x2).



www.eurotronic-europe.com

C/Pica d'Estats, 108-118 Poligono Industrial Sant Isidre
08272 Sant Fruitós de Bages (Barcelona) SPAIN

pedidos@eurotronic-europe.com Tel: +34 932 420 108